

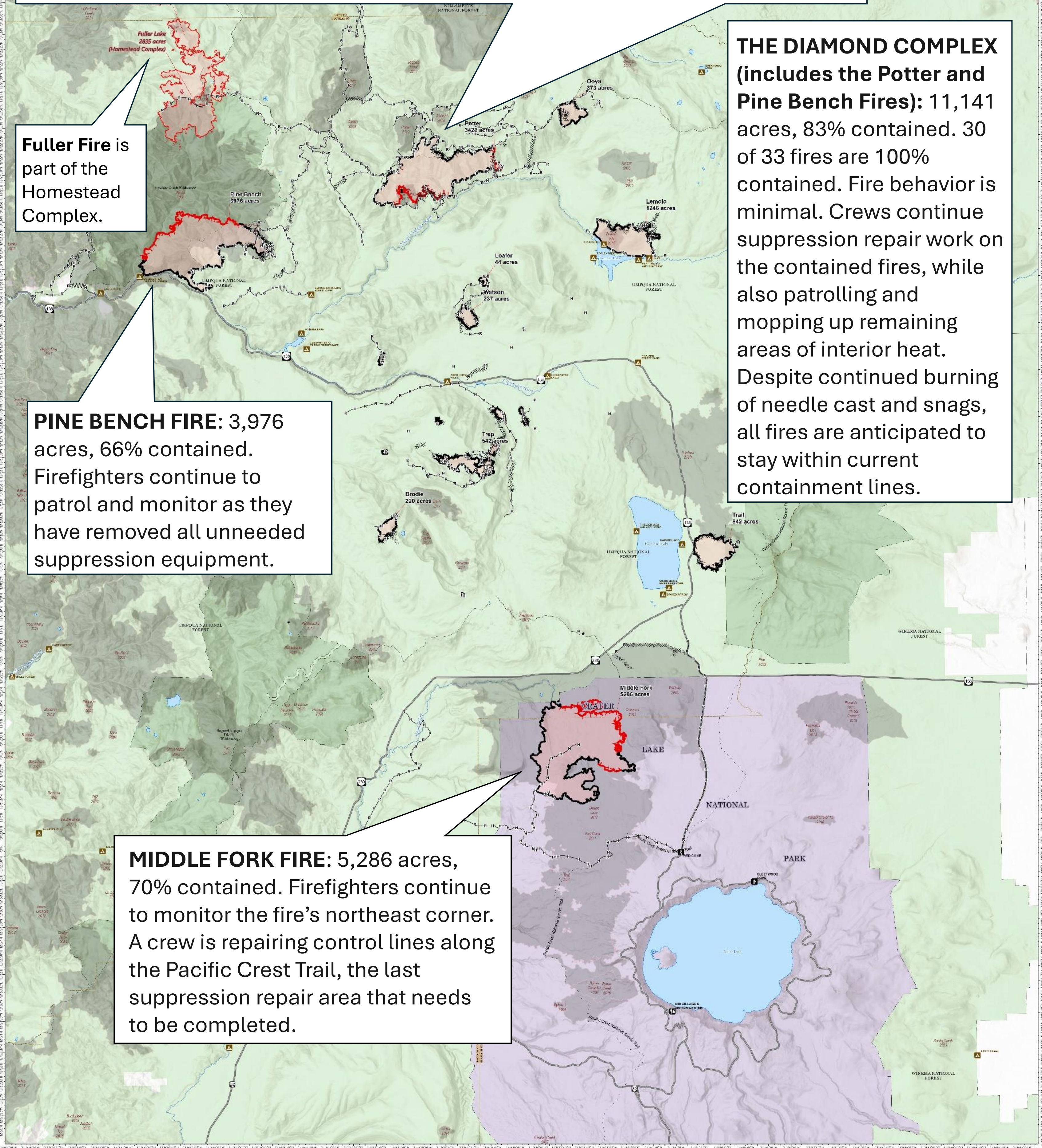
**POTTER FIRE:** 3,428 acres, 55% contained. Crews are moving equipment into the area to construct primary containment line on the fire's southwest corner. Firefighters continue to patrol and mop up lingering hot spots, especially within the Helen Creek drainage. They have begun suppression repair.

**Fuller Fire** is part of the Homestead Complex.

**PINE BENCH FIRE:** 3,976 acres, 66% contained. Firefighters continue to patrol and monitor as they have removed all unneeded suppression equipment.

**MIDDLE FORK FIRE:** 5,286 acres, 70% contained. Firefighters continue to monitor the fire's northeast corner. A crew is repairing control lines along the Pacific Crest Trail, the last suppression repair area that needs to be completed.

**THE DIAMOND COMPLEX (includes the Potter and Pine Bench Fires):** 11,141 acres, 83% contained. 30 of 33 fires are 100% contained. Fire behavior is minimal. Crews continue suppression repair work on the contained fires, while also patrolling and mopping up remaining areas of interior heat. Despite continued burning of needle cast and snags, all fires are anticipated to stay within current containment lines.



**Diamond Complex**  
OR-UPF-240303  
11,141 acres

**Middle Fork**  
OR-CLP-240223  
5,286 acres

From IR and GDS 07/2024 @ 2226 PDT



- Visitor Center
- Trailhead
- Campground
- Completed Fire Line
- Uncontained Fire Line
- Completed Dozer Line
- Completed Fuel Break
- Completed Hand Line
- Completed Mixed Construction Line
- Completed Road as Line
- Secondary Hwy
- State Highway
- Pacific Crest National Scenic Trail
- Fire Perimeter
- National Park Service (NPS)
- US Forest Service (USFS)
- USFS Wilderness

